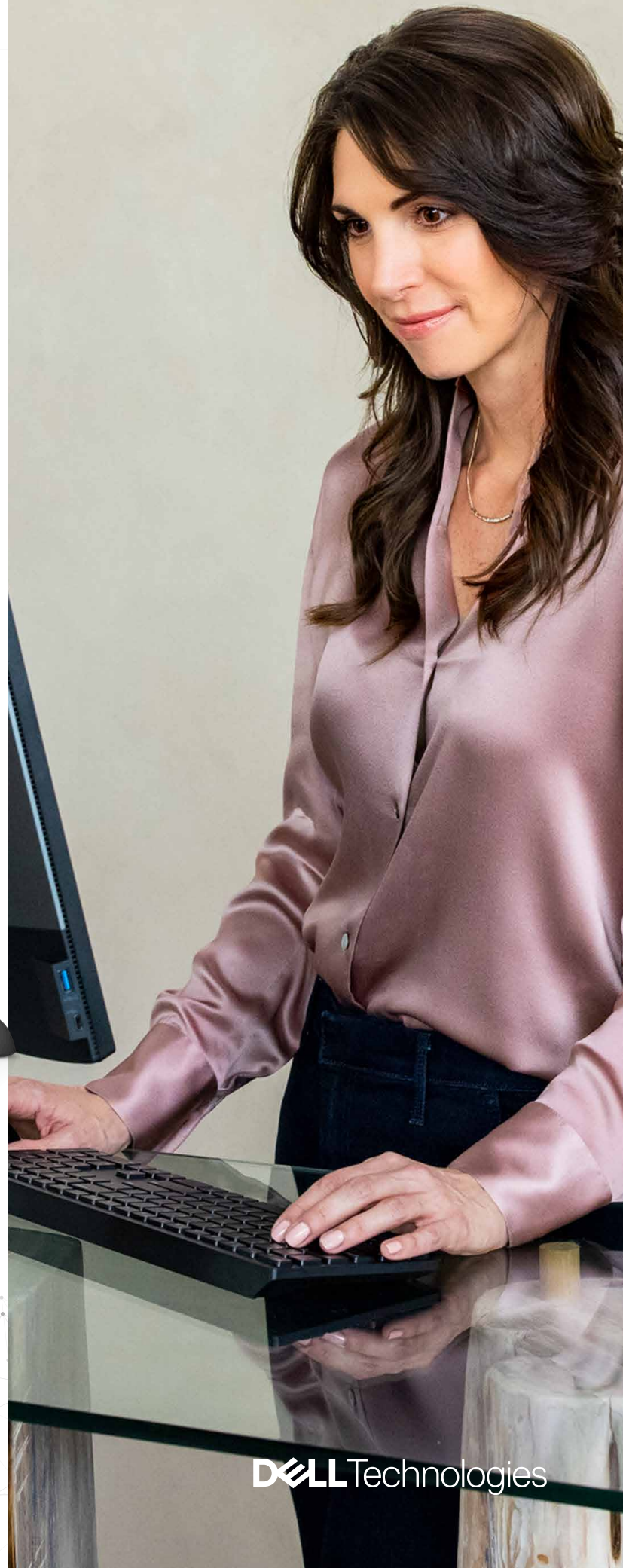


OPTIPLEX

7400 All-in-One

Powerful, intelligent
24" all-in-one
designed for premium
collaboration experiences



DELL Technologies

7400 All-in-One

Technology that revolves around you

Our most intelligent and responsive all-in-one with the built-in artificial intelligence of Dell Optimizer, enables ultimate interaction and collaboration.

• • •

Most powerful OptiPlex yet

Intel vPro® with 12th Gen Intel® Core™ i9 65W processors deliver business-class performance that accelerates productivity while minimizing security risks by leveraging technologies deep in the silicon¹

• • •

Wi-Fi6E option

Future-proof your IT with the industry's fastest speeds³

• • •

Smart connections

Native USB 3.2 Type C Gen 2x2 (20Gb), USB 3.2 Gen 2 (10 Gb) with easy access on the side panel

• • •

Tackle graphically intensive workloads

with optional AMD discrete graphics



Look your best even in low light

New webcam features Temporal Noise Reduction (TNR) and Wide Dynamic Range (WDR) so you can put your best face forward while video conferencing.



• • •

Work comfortably all day

Large FHD touch or non-touch display with new LBL (Low Blue Light) capability

• • •

Most intelligent with Dell Optimizer²

More intuitive app performance, connectivity and audio experiences

• • •

Hear and be heard

4 premium mics and performance speakers featuring Intelligent Audio deliver ultimate collaboration



• • •

Most sustainable OptiPlex ever

With up to 60% recycled materials,⁴ EPEAT Gold and ENERGY STAR qualified on select configurations

• • •

Our greatest breadth of custom accessories

including matching InfinityEdge FHD displays and wireless accessories

• • •

Maximum expandability

Dual SSD option for fast, reliable storage

7400 All-in-One

Sustainability on OptiPlex

OptiPlex is a leading platform for sustainable innovation and utilizes the most recycled content of all Dell PCs with up to 60% recycled plastic and closed-loop materials in its design.



Design

1st

OptiPlex was the first Dell product made with recycled materials in 2007.⁵

Sustainable Materials

60%

OptiPlex desktops contain up to 60% recycled and closed-loop materials.

Packaging Innovation

87%

87% of Dell's packaging is made from recycled or renewable materials.

OPTIPLEX HAS

100+

EPEAT registered products*



40+

TCO certified configurations



8.0

ENERGY STAR® throughout the portfolio



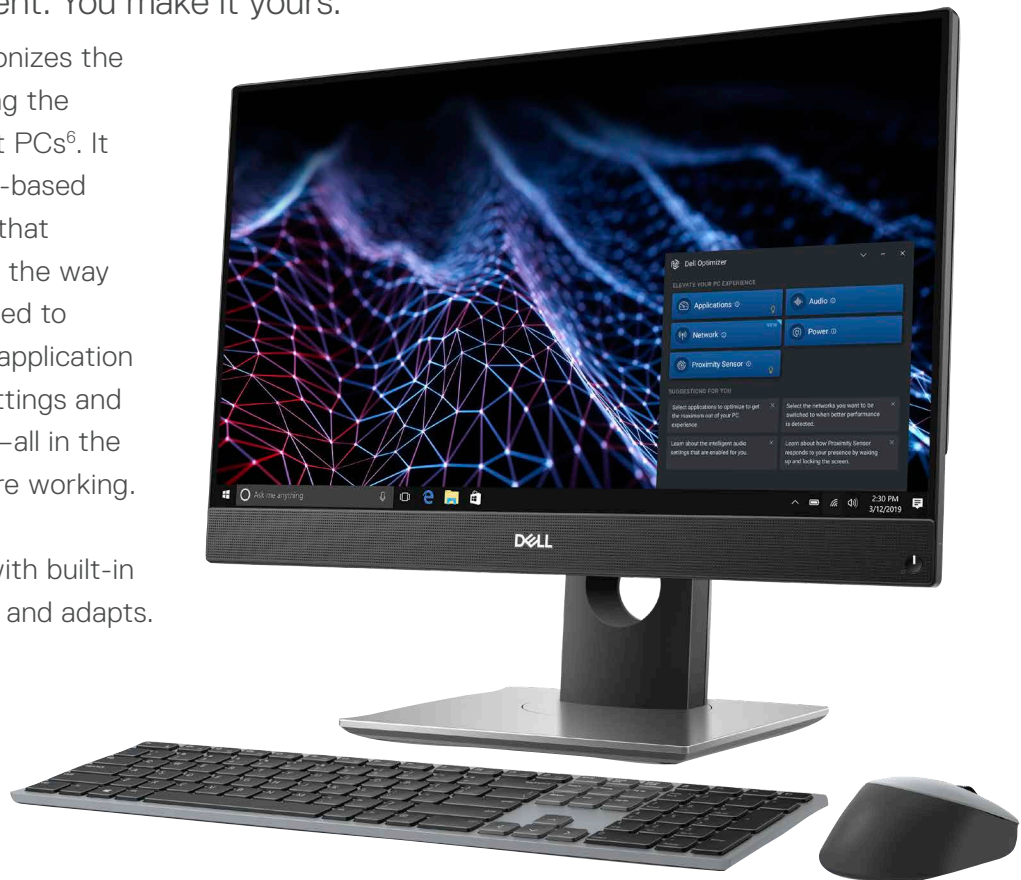
7400 All-in-One

Dell Optimizer

We make it intelligent. You make it yours.

Dell Optimizer revolutionizes the way you work by fueling the world's most intelligent PCs⁶. It is the only business, AI-based optimization software that learns and responds to the way you work and is designed to automatically improve application performance, audio settings and network connectivity—all in the background while you're working.

Accomplish anything with built-in intelligence that learns and adapts.



Improved performance

ExpressResponse⁷ analyzes how you use your preferred apps¹³ to boost performance.



Enhanced audio

Intelligent Audio delivers audio and mic enhancements and reduces background noise using Neural noise cancellation.



Unmatched connectivity

ExpressConnect¹⁴ provides the world's first simultaneous multi-network connection¹⁵ that joins the best network¹⁶ available.



Simplified manageability

Elevate work experience with an easy-to-manage application that provides a seamless experience for both end-users and IT decision-makers.



RECOMMENDED ACCESSORIES

DISPLAYS & INPUT DEVICES



**Dell 24 Monitor
- P2421D**

Work comfortably with an efficient 23.8" QHD monitor designed with an ultrathin bezel and small footprint.



**Dell Premier Multi-Device
Wireless Keyboard and Mouse
- KM7321W**

Multi-task seamlessly across 3 devices with this premium full-size keyboard and sculpted mouse combo featuring programmable shortcuts and 36 months battery life.*



**Targus Stylus for Capacitive
Touch Devices**

This convenient stylus features a durable rubber tip that won't scratch the screen and allows the user to type accurately and comfortably. It requires no power or software to operate and works instantly right out of the box.



**Dell Pro Stereo Headset
- WL7022**

Teams certified wireless headset offering active noise cancellation and smart sensors that automatically mute and unmute your call.

PURPOSE-BUILT STANDS



**OptiPlex All-in-One Height
Adjustable Stand**

Raise, tilt, pivot or swivel your All-In-One to enjoy the best view.



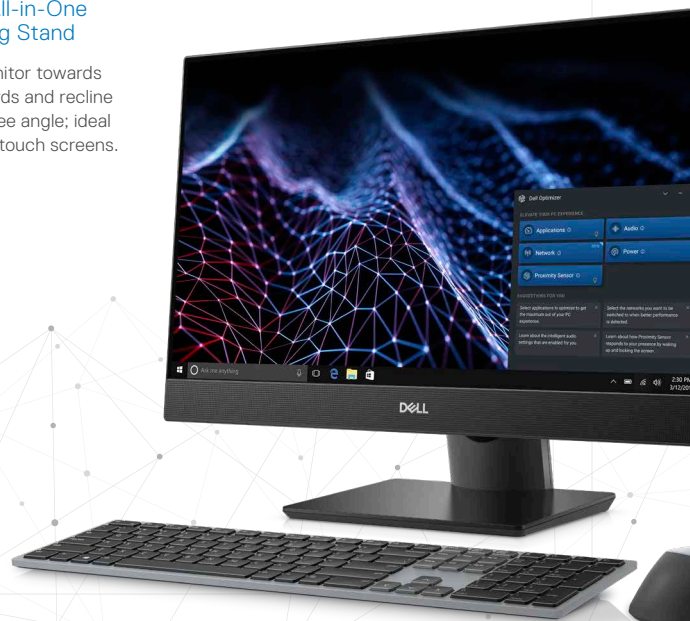
**OptiPlex All-in-One DVD+/-
RW enclosed with Height
Adjustable Stand**

In this custom Height Adjustable Stand, a DVD+/-RW drive is integrated into the base for optimal convenience.



**OptiPlex All-in-One
Articulating Stand**

Tilt your monitor towards and backwards and recline to a 60 degree angle; ideal for use with touch screens.



7400 All-in-One

FEATURE TECHNICAL SPECIFICATION

MODEL NUMBER	7400 All-in-One
PROCESSOR OPTIONS	<p>12th Generation Intel® Core™ i3-12100, 12MB cache, 4 cores, 8 threads, 3.30GHz to 4.30GHz, 60W</p> <p>12th Generation Intel® Core™ i3-12300, 12MB cache, 4 cores, 8 threads, 3.50GHz to 4.40GHz, 60W</p> <p>12th Generation Intel® Core™ i5-12400, 18MB cache, 6 cores, 12 threads, 2.50GHz to 4.40GHz, 65W</p> <p>12th Generation Intel® Core™ i5-12500, 18MB cache, 6 cores, 12 threads, 3GHz to 4.60GHz, 65W</p> <p>12th Generation Intel® Core™ i5-12600, 18MB cache, 6 cores, 12 threads, 3.30GHz to 4.80GHz, 65W</p> <p>12th Generation Intel® Core™ i7-12700, 25MB cache, 12 cores, 20 threads, 2.10GHz to 4.90GHz, 65W</p> <p>12th Generation Intel® Core™ i9-12900, 30MB cache, 16 cores, 24 threads, 2.40GHz to 5.10GHz, 65W</p>
OPERATING SYSTEM*	<p>Windows 11 Home, 64-bit</p> <p>Windows 11 Home National Academic, 64-bit</p> <p>Windows 11 Pro, 64-bit</p> <p>Windows 11 Pro National Academic, 64-bit</p> <p>Windows 11 CMIT Government Edition, 64-bit (China only)</p> <p>Ubuntu Linux 20.04 LTS, 64-bit</p> <p>Kylin Linux Desktop version 10.1 (China only)</p>
MEMORY OPTIONS^{8,9,10}	<p>4GB, 1 x 4GB, DDR4, 3200MHz</p> <p>8GB, 1 x 8GB, DDR4, 3200MHz</p> <p>16GB, 1 x 16GB, DDR4, 3200MHz</p> <p>16GB, 2 x 8GB, DDR4, 3200MHz, dual-channel</p> <p>32GB, 1 x 32GB, DDR4, 3200MHz</p> <p>32GB, 2 x 16GB, DDR4, 3200MHz, dual-channel</p> <p>64GB, 2 x 32GB, DDR4, 3200MHz, dual-channel</p>
PRIMARY HARD DISK DRIVE^{8,11}	<p>256GB, M.2 2230, PCIe Gen3 x4, SSD, Class 35</p> <p>512GB, M.2 2230, PCIe Gen3 x4, SSD, Class 35</p> <p>1TB, M.2 2230, PCIe Gen3 x4, SSD, Class 35</p> <p>256GB, M.2 2230, PCIe NVMe Gen3 x4, SSD, Self-Encrypting, Opal 2.0, FIPS, Class 35</p> <p>512GB, M.2 2280, PCIe NVMe Gen4 x4, SSD, Class 40</p> <p>1TB, M.2 2280, PCIe NVMe Gen4 x4, SSD, Class 40</p> <p>2TB, M.2 2280, PCIe NVMe Gen4 x4, SSD, Class 40</p> <p>512GB, M.2 2280, PCIe NVMe Gen3 x4, SSD, Self-Encrypting, Opal 2.0, FIPS, Class 40</p> <p>1TB, M.2 2280, PCIe NVMe Gen3 x4, SSD, Self-Encrypting, Opal 2.0, FIPS, Class 40</p>
GRAPHICS	<p>Intel® UHD Graphics 730 with 12th Generation Intel® Core™ i3-12100, i3-12300, and i5-12400 processors</p> <p>Intel® UHD Graphics 770 with 12th Generation Intel® Core™ i5-12500/i5-12700/i7/i9 processors</p> <p>AMD Radeon™ R21M-P50-50, GDDR6</p>
DISPLAY OPTIONS*	<p>23.8-inch, FHD 1920 x 1080, 60Hz, anti-glare, touch, 72% NTSC, 250 nits, wide viewing angle, WLED, capacitive touch stylus</p> <p>23.8-inch, FHD 1920 x 1080, 60Hz, anti-glare, non-touch, 99% sRGB, 250 nits, wide viewing angle, WLED</p>
CASE COLOR	N/A
PRODUCTIVITY SOFTWARE*	<p>Microsoft Office 30-day trial - No license included</p> <p>Microsoft Office Professional 2019</p> <p>Microsoft Office Home and Business 2019 + Adobe Acrobat Standard 2020</p> <p>Dell Optimizer 3.0</p> <p>Dell Hybrid Client 1.6 (optional)</p>
SECURITY SOFTWARE	<p>McAfee® Small Business Security 30-day free trial</p> <p>McAfee® Small Business Security 12-month subscription</p> <p>McAfee® Small Business Security 36 month subscription</p> <p>Intel Guard Technologies & Secure Key: Software Guard (SGX), Data Guard (vPro only), Boot Guard, BIOS Guard (Core CPU's only), OS Guard (Core CPU's only) and Secure Key (i5 or greater only)</p> <p>Intel Runtime BIOS Resilience (Copper Point) with attestation via Nifty Rock + Intel TXT</p> <p>Support of Absolute Persistent Module BIOS agent v2</p> <p>OpenXT validation required</p> <p>SafeGuard and Response, powered by VMware Carbon Black and Secureworks</p> <p>Next Generation Antivirus (NGAV)</p> <p>Endpoint Detection and Response (EDR)</p> <p>Threat Detection and Response (TDR)</p> <p>Managed Endpoint Detection and Response</p> <p>Incident Management Retainer</p> <p>Emergency Incident Response</p> <p>SafeData</p>

FEATURE TECHNICAL SPECIFICATION

WARRANTY^{12,13}	<p>3-year Basic warranty with hardware service on-site service after remote diagnosis</p> <p>4-year Basic warranty with hardware service on-site service after remote diagnosis</p> <p>5-year Basic warranty with hardware service on-site service after remote diagnosis</p> <p>3-year ProSupport with Next Business Day on-site service</p> <p>4-year ProSupport with Next Business Day on-site service</p> <p>5-year ProSupport with Next Business Day on-site service</p> <p>3-Year ProSupport Plus for Client with Next Business Day on-site service</p> <p>4-year ProSupport Plus for Client with Next Business Day on-site service</p> <p>5-year ProSupport Plus for Client with Next Business Day on-site service</p>
ACCIDENTAL DAMAGE SERVICES	<p>3-year Accidental Damage Service</p> <p>4-year Accidental Damage Service</p> <p>5-year Accidental Damage Service</p>
KEYBOARD*	Dell Pro Wireless Keyboard and Mouse - KM5221W
PORTS	<p>Side:</p> <p>USB 3.2 Gen 2x2 capable Type-C® port</p> <p>USB 3.2 Gen 1 port with PowerShare</p> <p>Universal audio port</p> <p>Rear:</p> <p>RJ-45 Ethernet port</p> <p>(2) USB 3.2 Gen 2 ports</p> <p>(2) USB 3.2 Gen 1 ports with Smart Power On</p> <p>Line-out audio port</p> <p>DisplayPort++ 1.4a/HDCP 2.3 port</p> <p>HDMI-IN—HDMI 1.4a port</p> <p>HDMI-OUT—HDMI 2.0 port</p>
OPTICAL DRIVE	8x DVD+/-RW, optional (through Height Adjustable Stand with Optical Disk Drive)
SLOTS	<p>SD-card slot (side)</p> <p>M.2 2230 slot for Wi-Fi and Bluetooth card</p> <p>(2) M.2 2230/2280 slots for SSD</p> <p>SATA 3.0 connector (UMA chassis only)</p> <p>Kensington security-cable slot</p>
DIMENSIONS	<p>US:</p> <p>Height (front): 13.54in. (344.00mm)</p> <p>Height (rear): 13.54in. (344.00mm)</p> <p>Width: 21.26in. (540.20mm)</p> <p>Depth: 2.07in. (52.60mm)</p> <p>Weight (minimum): 13.62lbs. (6.18Kg)-without stand</p> <p>Weight (maximum): 15.06lbs. (6.83Kg)-without stand</p> <p>Rest of the world:</p> <p>Height (front): 344.00mm (13.54in.)</p> <p>Height (rear): 344.00mm (13.54in.)</p> <p>Width: 540.20mm (21.26in.)</p> <p>Depth: 52.60mm (2.07in.)</p> <p>Weight (minimum): 6.18Kg (13.62lbs.)-without stand</p> <p>Weight (maximum): 6.83Kg (15.06lbs.)-without stand</p>
CAMERA	<p>1080p at 30fps, FHD RGB camera</p> <p>1080p at 30fps, FHD RGB + IR camera</p>
AUDIO & SPEAKERS*	Stereo speakers with Waves MaxxAudio Pro, 5W x 2 = 10W total
CHASSIS	<p>Stands:</p> <p>Fixed stand</p> <p>Height Adjustable stand</p> <p>Articulating stand</p> <p>Height Adjustable stand with Optical Disk Drive</p>
WIRELESS	<p>Intel® AX201, 2x2, MIMO, 2400Mbps, 2.40/5GHz, Wi-Fi 6 (WiFi 802.11ax), Bluetooth® 5.2</p> <p>Intel® AX211, 2x2, MIMO, 2400Mbps, 2.40GHz/5GHz/6GHz, Wi-Fi 6E (WiFi 802.11ax), Bluetooth® 5.2</p> <p>Realtek RTL8822CE, 2x2, MIMO, 867Mbps, 2.40GHz/5GHz, Wi-Fi 5 (WiFi 802.11ac), Bluetooth® 5.0</p>
BATTERY OPTIONS	No battery

7400 All-in-One

FEATURE TECHNICAL SPECIFICATION

POWER OPTIONS	80 PLUS internal Power Supply Unit (PSU): 160W internal power supply unit (PSU)-UMA configuration 220W internal power supply unit (PSU)-Discrete configuration
REGULATORY AND ENVIRONMENTAL COMPLIANCE^{14,15}	EPEAT registered configurations available ENERGY STAR qualified configurations available TCO 8.0 certified configurations available US CEC MEPS compliant configurations available Australia and New Zealand MEPS compliant configurations available CEL WEEE Japan Energy Law South Korea E-standby EU RoHS China RoHS
CHIPSET	Intel® Q670 PCH
KEYBOARD AND MOUSE	Dell Wired Mouse with Fingerprint Reader - MS819 (Optional) Dell Premier Wireless Keyboard/Mouse - KM7321W Dell Pro Wireless Keyboard/Mouse - KM5221W (Base on AIO)
AUDIO HEADSETS	Dell Pro Stereo Headset - UC350 Dell Pro Wired Headset - WH3022
HARDWARE SECURITY	Dell Lockable port cover (optional) Chassis lock slot support Noble Custom AIO Plate Lock (optional) Supply chain tamper alerts Chassis intrusion switch Trusted Platform Module (Discrete TPM Enabled) SafeBIOS including Dell Off-host BIOS Verification BIOS Resilience BIOS Recovery, and additional BIOS Controls SafeID including Trusted Platform Module (TPM) 2.0 Self-Encrypting Drives (SED) Smart card keyboard (FIPS) D-Pedigree (Secure Supply Chain Functionality) Dell wired mouse with fingerprint reader
STANDS	Fixed stand Height Adjustable Stand Articulating stand Height Adjustable Stand with Optical Disk Drive
SYSTEMS MANAGEMENT	Dell Client Command Suite for In-Band systems management Intel® vPro™ Enterprise for Out-of-Band systems management Intel® Standard Manageability
CONFIGURATION SERVICES	Factory image load BIOS customization Hardware customization Asset Tagging and Reporting

* Based on Dell analysis of battery life usage model calculations, Nov. 2020. Results vary depending on use, operating conditions and other factors.

1 Offering may vary by region. Some items may be available after product introduction. For complete details, refer to the Technical Guidebook published on www.dell.com/support.

2 System Memory and Graphics: Significant system memory may be used to support graphics, depending on system memory size and other factors.

3 4GB or Greater System Memory Capability: A 64-bit operating system is required to support 4GB or more of system memory.

4 Particular versions of Microsoft Windows may not support the full Bluetooth 4.2 functionality.

5 Storage Option: GB means 1 billion bytes and TB equals 1 trillion bytes; actual capacity varies with preloaded material and operating environment and will be less.

6 Dell Services: Availability and terms of Dell Services vary by region. For more information, visit www.dell.com/servicesdescriptions.

7 For complete listing of declarations and certifications, refer to the Dell Regulatory and Environmental Datasheet found in the Manuals section of Product Support information www.dell.com/support/home/us/en/19.

8 Offering may vary by region. Some items may be available after product introduction. For complete details, refer to the Technical Guidebook published on www.dell.com/support.

9 System Memory and Graphics: Significant system memory may be used to support graphics, depending on system memory size and other factors.

10 4GB or Greater System Memory Capability: A 64-bit operating system is required to support 4GB or more of system memory.

11 Storage Option: GB means 1 billion bytes and TB equals 1 trillion bytes; actual capacity varies with preloaded material and operating environment and will be less.

12 Limited Hardware Warranty: For copy of Ltd Hardware Warranty, write Dell USA LP, Attn: Warranties, One Dell Way, Round Rock, TX 78682 or see www.dell.com/warranty.

13 On-site service after Remote Diagnosis: Remote Diagnosis is determination by online/phone technician of cause of issue; may involve customer access to inside of system and multiple or extended sessions. If issue is covered by Limited Hardware Warranty (www.dell.com/warranty) and not resolved remotely, technician and/or part will be dispatched, usually within 1 business day following completion of Remote Diagnosis. Availability varies. Other conditions apply.

14 Please refer to www.epeat.net for specific country registration rating and participation.

15 For complete listing of declarations and certifications, refer to the Dell Regulatory and Environmental Datasheet found in the Manuals section of Product Support information www.dell.com/support/home/us/en/19.